










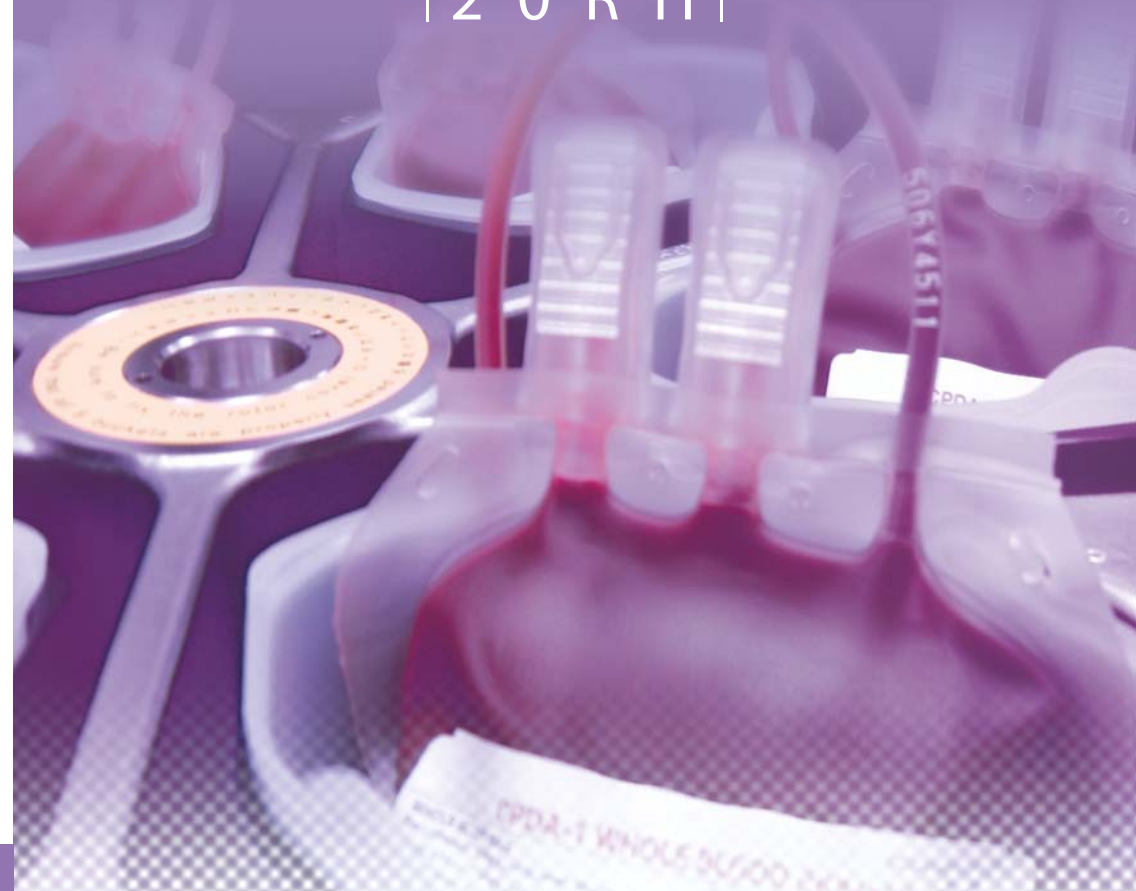


SW20RH
Large Capacity
Refrigerated Floor
Centrifuge

SW
20RH

SW20RH Rotor and Adapter

Rotor (Order no.)		Max. Speed (rpm)	Max. RCF (x g)		Tube/ bottle size (ml)	Tube Dimension (Dia. x L, mm)	Total tubes x Max. Capacity (ml)	Adapter Required *
Angle Rotor	T10A5  (CENSW20000002)	7,000	9,200		500 ml	73 x 163	6 x 500	
Swing Bucket Rotors	TR5S2  Round bucket included (CENSW20000003)	4,200	5,150		1000 ml	97 x 177	6 x 1000	
		4,200	5,150		500 ml	72 x 163	6 x 500	*
		4,200	5,150		250 ml	61 x 125	6 x 250	*
		4,200	5,150		100 ml	42 x 117	18 x 100	*
	TR5S3  Oval bucket and adapter included (CENSW20000004)	4,200	5,150		50 ml	29 x 104	36 x 50	*
		3,000	2,620		50 ml - glass	35 x 100	24 x 50	*
		4,200	5,150		15 ml	16.5 x 113	84 x 15	*
		3,000	2,620		15 ml - glass	17 x 110	90 x 15	*
		4,200	5,150		10 ml	15.5 x 81	60 x 10	*
		3,000	2,620		10 ml - glass	12 x 105	78 x 10	*
TR5S3	4,200	5,150		50 ml - conical	30 x 115	24 x 50	*	
	4,200	5,150		15 ml - conical	17 x 120	60 x 15	*	
TR5S3		4,200	5,150		5 ml Blood tube	12-13 x 75-100	114 x 3-10	*
TR5S3	 Oval bucket and adapter included (CENSW20000004)	4,200	5,030		Blood bag	-	12 x blood bags (350 / 450 ml)	



Other Froilabo products



Oven



Ultralow Freezer



Incubator



ICH Chamber



Centrifuge

Froilabo

Froilabo SAS

8 Bd Monge
69330 MEYZIEU
France
Tel : (33) 478 047 575
Fax : (33) 478 047 576
Email : froilabo@froilabo.com
www.froilabo.com

Distributor information

CENTRIFUGE

LARGE CAPACITY REFRIGERATED

Froilabo

SINCE 1918

SW20RH

Large Capacity Refrigerated Floor Centrifuge

Ideal choice for biotechnology institutes, blood bank and clinics



Powerful Centrifuge

SW20RH is a powerful, easy-to-use Large Capacity Refrigerated Floor Centrifuge that allows you to separate blood components quickly and cost-effectively while ensuring product quality, safety, and GMP compliance. With its outstanding performance, SW20RH can be used in centrifuging blood bags and large volume sample in biotechnology industry. Maximum capacity of 6 x 1000 ml and excellent stability make SW20RH a rugged and reliable centrifuge.

High Performance

High performance and large capacity of the centrifuge satisfy the stringent requirements of blood bank and biotechnology products manufacturing.

Max. speed at 7,000 rpm (T10A5 rotor)

Max. g-force at 9,200 × g

Max. capacity at 6,000 ml (TR5S2 rotor, 4,200 rpm / 5,150 × g)

Advanced Induction Drive

With its advanced induction drive, there is no need to change carbon brushes. This innovative drive provides outstanding performance and prolonged drive lifespan.



9 Accel./ 10 Decel. Profile

Choice of 9 acceleration and 10 deceleration settings allow delicate gradients and protect sensitive samples from abrupt speed changes in the crucial range between 0 and 500 rpm.

User Friendly Operation and Information Rich Display

Large LCD with running profile display

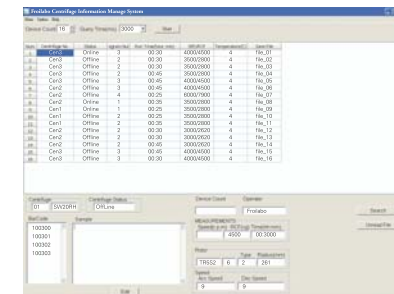


Rotor Expandable System

The parameters for new rotors can be registered into rotor library.

Intuitive GLP/GMP Management Software

GLP/GMP Management software is a laboratory information system for centrifuges, providing accurate data collection. It also provides consistent process control, complete traceability, multi-unit monitoring and database management with a user-friendly interface.

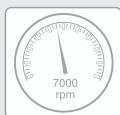


Safety is Paramount

SW20RH equipped with dual lid lock and error detection function including overspeed, imbalance and motor overheat. And provide 21 type self diagnosis message for easy fault finding.

Technical specifications

Max. speed	7,000 rpm (T10A5 rotor)
Max. g-force	9,200 (× g)
Speed control accuracy	±10 rpm
Max. capacity	6 liters (1,000 ml × 6) (TR5S2 rotor)
Timer	1 minute ~ 99 hours 59 minutes, with HOLD function (continuous mode)
Temperature setting range (Accuracy)	-20°C ~ 40°C (±1°C)
Acceleration / Deceleration rate	9/10 (Stages 9 is the fastest)
Drive motor	Induction drive motor
Refrigerator capacity	3KW, R404a refrigerant
Program memory	33 programs
Power supply	Single phase, ~220V±10%, 50±1Hz, Rate 30A
Dimension	730 (L) × 910 (D) × 1,150 (H) mm
Weight	400 kg
Other functions	- Tight-down-free features for angle rotor - Automatic temperature compensation - RPM / RCF input selectable - Step-run program



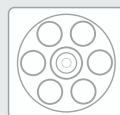
Max. speed



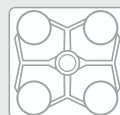
Maximum capacity (6L)



Cooled function



Fixed angle rotor option



Swing-out rotor option



Blood bag bucket option